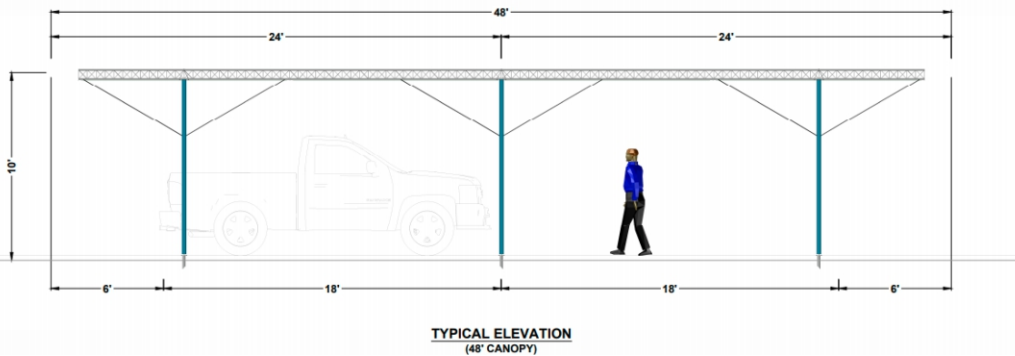


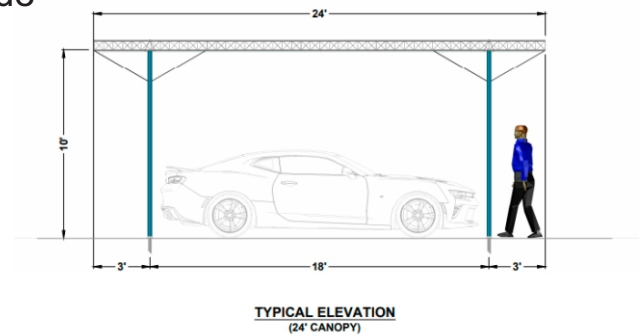
# Hail-O Modular Truss Hail Canopy



35+ years of experience



- Peace of mind hail protection in 24' wide and 48' wide double rows
- Rugged modular truss design
- Extensively strength tested fire rated premium hail protection fabric
- Floating foundations that can sit above most underground utilities
- 18ft, 27ft & 36ft modules readily adapt to your parking configurations



- Truss is suited for attaching signage, lighting, solar arrays and more
- Simplified, fast and efficient installation with forklift and hand tools
- Easily relocated as your requirements grow
- Slender poles to optimize parking spaces
- Minimal order lead time
- Optional windward side screens for increased protection
- Choose your colour

At under \$2000 per vehicle the structure will pay for itself in one major hail storm!

For multi-acre rectangular areas, tall vehicles like RV's or boats, laissez faire parking or storage areas please refer to large area hail canopy features and benefits sheet



Maintain curbside appeal with unobstructed views of your dealership The transparent fabric allows the sun to shine through and creates a comfortable environment that allows your cars to be the show!



WWW.WEATHERSOLVE.COM | 1.800.749.2201